

ADDENDUM NO. 01

to the
Bidding Documents

for

Lewis Central Community School District
Lewis Central High School Entry Addition
Council Bluffs, Iowa 51503
BCDM Project No. 5551-00

BCDM Architects
1015 North 98th Street, Suite 300
Omaha, Nebraska 68114

June 30, 2025

NOTE: ADDENDA MAY BE VIEWED AT WWW.ADTECHSUPPLY.COM

Attached is the Sign-in Sheet from the Pre-Bid Meeting held on June 26, 2025.

REMINDER: BID DATE AND TIME: THURSDAY, JULY 17TH, 2025 AT 2:00 P.M.

NOTICE TO BIDDERS: The Project Manual and Drawings for the above referenced project are hereby amended as follows:

PROJECT MANUAL

SECTION 01 10 00 – SUMMARY OF WORK

- a. Page 01 10 00-2, Paragraph 1.09 WORK SEQUENCE, add the following paragraph:
 - A. The Contractor shall review the building and shall prepare a work sequence of events and major milestones. All events and milestones shall be reflected in a project schedule to be submitted to the Architect and Owner for review. Submit project schedule for review no later than 30 days following the Notice to Proceed.
 - 1. Sequence, coordination and timing of the Work is the responsibility of the Contractor; however, work activities must fall within the guidelines outlined in this section. Work for the building addition may begin immediately following school board approval. The building renovation for the existing administrative suite is to begin Summer of 2026.
 - 2. Construct Work in stages to accommodate Owner use of building and site during construction; coordinate construction schedule and operations with Owner.
 - 3. Construct Work in stages to provide for continuous public usage of the building and site during the school years, do not close off public usage of facilities.
 - 4. Existing corridors, exit doors, and stairs shall be maintained as clear, unobstructed egress pathways.

SECTION 10 11 00 – VISUAL DISPLAY UNITS

- a. Page 10 11 00-1, Paragraph 2.01, add the following approved manufacture as #4:
 - 4. ASI Group; 9800 Series Pre-Framed Porcelain Markerboard.

SECTION 28 46 00 – FIRE DETECTION AND ALARM

- a. Page 28 46 00-2, Article 2.01 MANUFACTURERS, modify the entirety of Paragraph A with the following:
 - A. Gamewell-FCI, E3 Series: www.gamewell-fci.com.

DRAWINGS

CIVIL DRAWINGS

- a. See Lamp Ryneerson Addendum No. 1 drawing attachments.

END OF ADDENDUM



Project Name: Lewis Central High School - Entry Addition

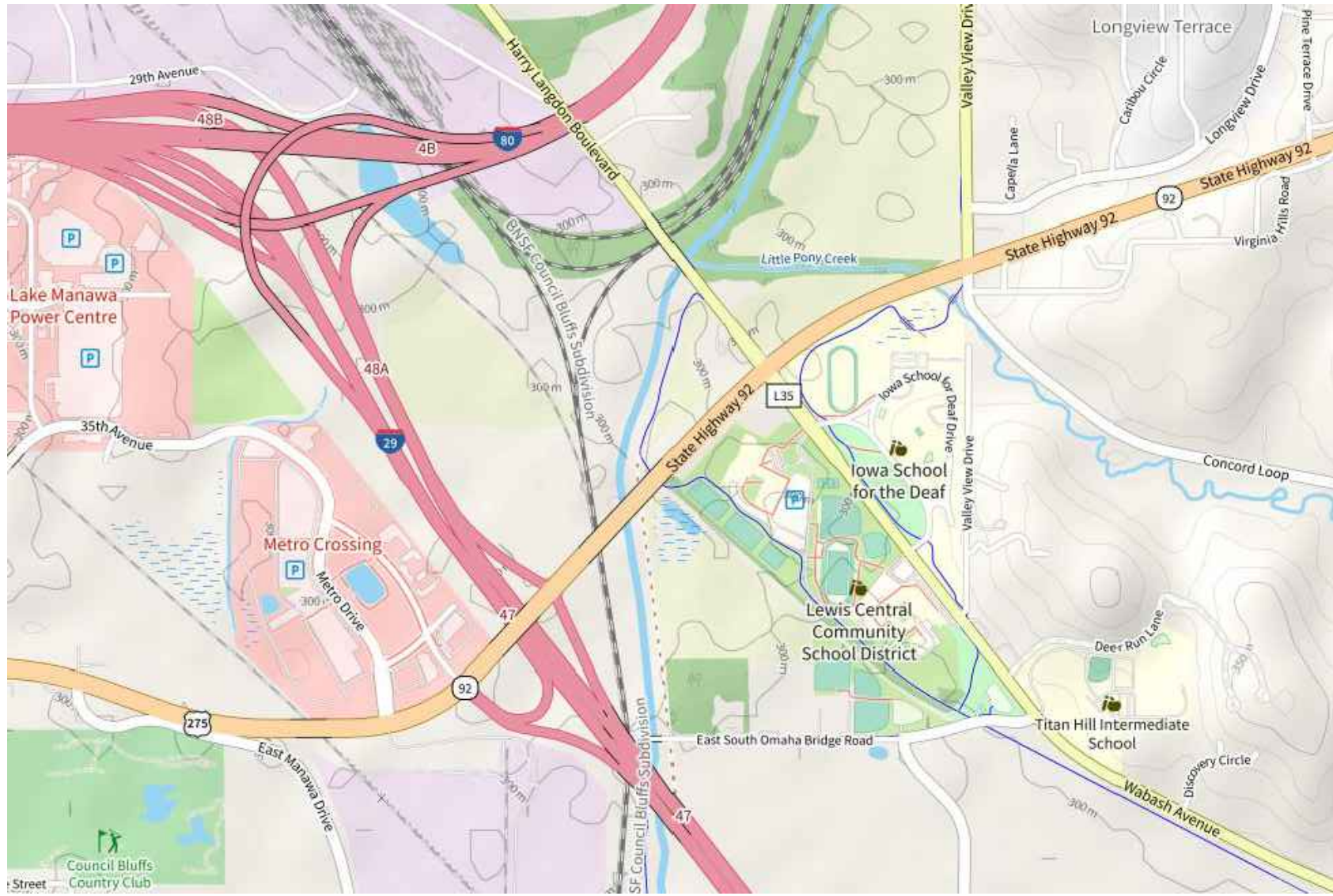
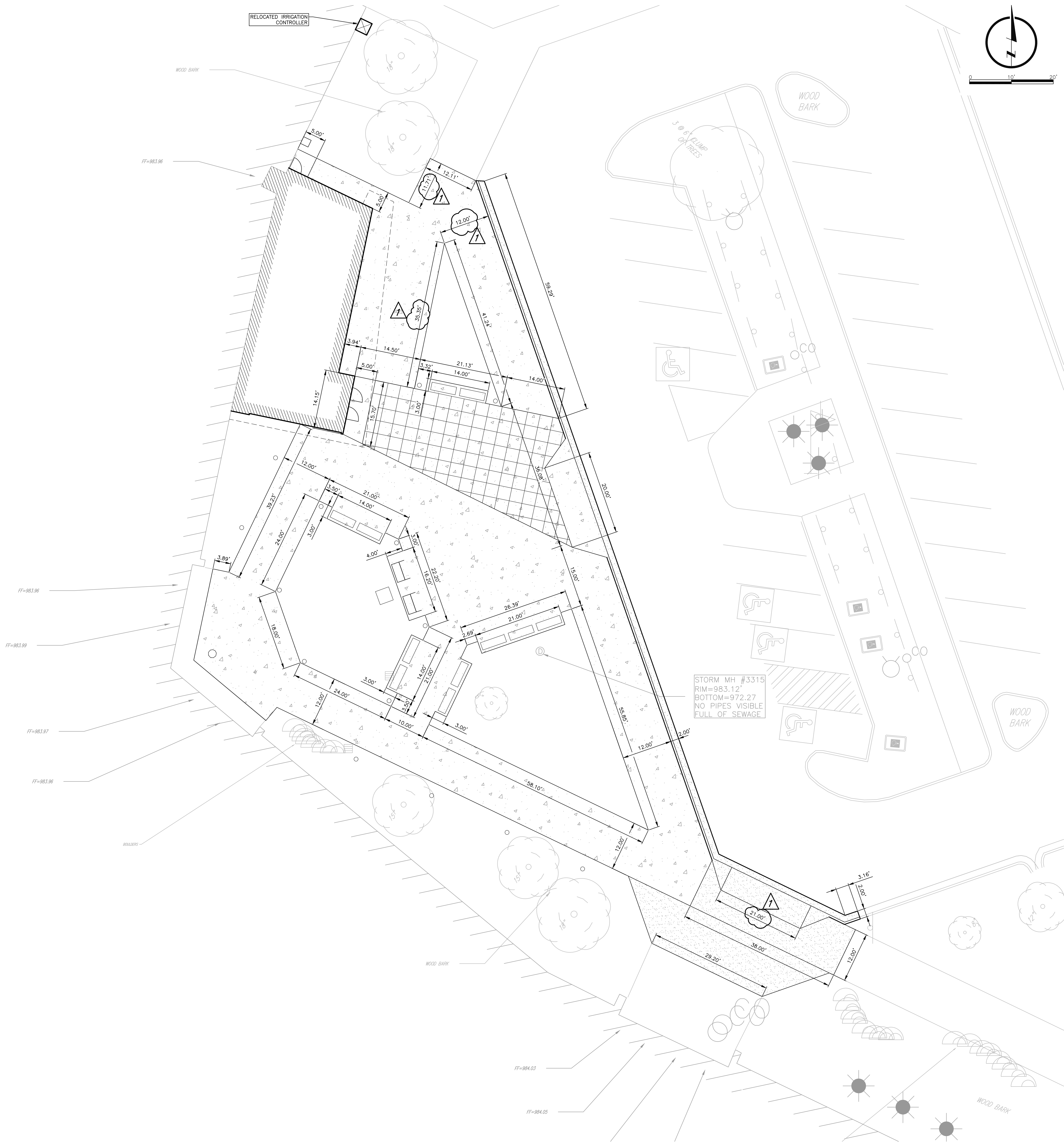
BCDM #: 5551-00

Date: June 26, 2025

PRE-BID CONFERENCE

PLEASE PRINT

NAME	COMPANY	PHONE	CELL	E-MAIL
Dante Doral:	BCDM	402-920-4308	402-889-6517	ddoral@bcdm.net
GREG STIERER	BCDM	402-350-8417		gstierer@bcdm.net
MIKE MATHEWS	ALL PURPOSE CONST.	402-331-2550	402-880-7184	apuhone@aol.com
ILANNA FERN	MFCO HENNE	402-339-8127	402-699-6556	ESTIMATING@MFCOHENNE.com
Lou Carnazzo	KEFFEX	402-316-6422		lou@keffexcontracting.com
Craig Moore	ELEVATE Construction	402-686-0330		Craig@elevateconst.com
Adam Heyen	Grunwald Mech	531-346-5484		aheyen@grunwald1.com
Andrew Christensen	Beckenhauer Construction	402-902-0023		achristensen@beckenhauerconstruction.com
Adam Guthrie	Lund Ross Constructors	402-689-1253		adamg@lundross.com
Mike Mang	Mark III Enterprises	402-990-9195		michael@markiiienterprises.com
CHARLES CORMACI	CORMACI CONST.	402-706-2710		CHARLES@CORMACI.CONSTRUCTION.COM
James Linnert	Cormaci Const.	402-689-2619		Jimmy@cormaciconstruction.com
Andrew Reinhardt	Hausmann Const.	402-216-2463		Andrews@hausmannconstruction.com



LOCATION MAP

LEGAL DESCRIPTION:	NE 1 of the SW 1, SECTION 7, T47N, R43W, COUNCILBLUFFS, IOWA
ZONING COMPLIANCE AND SITE PLAN REVIEW	
ADDRESS	3504 HARRY LANGDON BLVD.
APPLICANT	LEWIS CENTRAL COMMUNITY SCHOOL DISTRICT
PHONE NUMBER	(712) 366-8248
USE TYPE:	HIGH SCHOOL
IMPROVEMENT	SITE PLAN
ZONING:	A-P (SEE SECTION 15.13)
[X]	PERMITTED USE
[]	CONDITIONAL USE
[]	SPECIAL USE
[]	AIRPORT USE
[]	855 REVIEW

SITE REGULATORS (SEE SECTION 15.13):	ALLOWED	PROPOSED	COMMENTS
A. SITE AREA	5,000 SF MIN.	997,959 SF	
B. MINIMUM WIDTH	50 FEET	515 FEET	
C. MINIMUM DEPTH	100 FEET	990 FEET	
D. SETBACK			
FRONT YARD	25'	N/A	EXISTING BUILDING
STREET SIDE YARD	15'	N/A	EXISTING BUILDING
INTERIOR SIDE YARD	5'	N/A	EXISTING BUILDING
REAR YARD	20'	N/A	EXISTING BUILDING
E. HEIGHT	50' MAX	70'	EXISTING BUILDING
F. LOT COVER ALL STRUCTURES (%)	90%	14%	
G. PARKING REQUIREMENTS	1 SPACE PER CLASSROOM/1 SPACE PER 4 PERSON CAPACITY = 660 STALLS	526 SPACES	529 EXISTING STALLS
(SEE SECTION 15.23.030)			3 STALLS REMOVED
H. ACCESSIBLE PARKING	11 SPACES	14 SPACES	
(SEE SUDAS TABLE BC-1.02)			

BUFFERYARD (SEE SECTION 15.23):	
ADJACENT ZONING:	R-1 NORTH, A-2 SOUTH, A-P EAST AND C-2 WEST
I. LANDSCAPED BUFFER YARD	N/A

GENERAL NOTES

- ALL SITE WORK SHALL BE IN ACCORDANCE WITH THE "IOWA STATEWIDE URBAN DESIGN AND SPECIFICATIONS (SUDAS) DESIGN MANUAL, CURRENT EDITION" AND ANY "CITY OF COUNCIL BLUFFS REVISIONS OR AMENDMENTS THERETO SHALL APPLY TO THIS PROJECT, EXCEPT AS MODIFIED BY THESE SPECIFICATIONS, SPECIAL CONDITIONS, AND/OR THE CONSTRUCTION DRAWINGS.
- EXISTING UTILITIES ARE SHOWN AS A CONVENIENCE FOR THE CONTRACTOR. THE LOCATIONS OF ALL AERIAL AND UNDERGROUND UTILITIES MAY NOT BE INDICATED IN THESE PLANS. THE CONTRACTOR SHALL NOTIFY ALL UTILITY COMPANIES 48 HOURS BEFORE WORK IS STARTED TO VERIFY UTILITY LOCATIONS (ONE CALL 1-800-292-6889).
- BARRICADES SHALL CONFORM TO THE "MANUAL ON UNIFORM TRAFFIC CONTROL DEVICES".
- THE CONTRACTOR SHALL PROVIDE THE ENGINEER/ARCHITECT WITH A CONSTRUCTION RECORD DRAWING INDICATING ALL CHANGES IN GEOMETRY, GRADES, ELEVATIONS OR MATERIAL ON THE PROJECT PRIOR TO FINAL ACCEPTANCE.
- THE CONTRACTOR IS RESPONSIBLE FOR OBTAINING ALL PERMITS REQUIRED TO COMPLETE THIS PROJECT, BESIDES THE GRADING PERMIT, AND IS RESPONSIBLE FOR THE PAYMENT OF ALL FEES ASSOCIATED WITH THESE PERMITS.
- THE CONTRACTOR SHALL CONTACT THE SOILS ENGINEER TO OBSERVE THE SUBGRADE PRIOR TO PLACING PAVEMENT TO DELINEATE ANY AREAS WHERE SUBGRADE OVEREXCAVATION MAY BE REQUIRED.
- THE CONTRACTOR SHALL VERIFY THE LOCATIONS AND ELEVATIONS OF ALL PROPOSED UTILITY CONNECTIONS WITH THE ARCHITECTURAL CONSTRUCTION DOCUMENTS.
- THE INSTALLATION OF UTILITIES MAY REQUIRE THE DISTURBANCE OF EXISTING DRAINAGE AND EROSION CONTROL MEASURES. THESE ITEMS MAY INCLUDE LEVEL TERRACES, INTERCEPTOR SWALES, SILT FENCE AND ROCK CONSTRUCTION ENTRANCES. THE CONTRACTOR SHALL MAKE THEMSELVES AWARE OF THE EXISTING SITE CONDITIONS PRIOR TO BIDDING THIS WORK. THE FUNCTION OF THESE ITEMS MUST BE MAINTAINED THROUGHOUT CONSTRUCTION WITH EMPHASIS PLACED ON RESTORING THEIR INTEGRITY PRIOR TO ANY RAINFALL EVENT. AS PART OF THIS CONTRACT, ALL DISTURBED DRAINAGE AND EROSION CONTROL STRUCTURES SHALL BE RESTORED TO GOOD CONDITION AFTER COMPLETION OF THE WORK OR AS DIRECTED BY THE ENGINEER/ARCHITECT.
- SEE PLAN SHEETS FOR ADDITIONAL NOTES.

PROJECT TEAM

ARCHITECTURE + INTERIORS

BCDM ARCHITECTS
1015 North 98th Street, Suite 300
Omaha, NE 68114

CIVIL ENGINEER

LAMP RYNEARSON
14710 W. Dodge Rd. Suite 100
Omaha, NE 68154

STRUCTURAL ENGINEER

LANGE STRUCTURAL GROUP
1919 S 40th Street Suite 302
Lincoln, NE 68506

MECHANICAL + ELECTRICAL ENGINEER

ALVINE
1201 Cass Street
Omaha, NE 68102

REVISION SCHEDULE		
#	Description	Date

LEWIS CENTRAL HIGH SCHOOL ENTRY ADDITION

3504 Harry Langdon Blvd,
Council Bluffs, IA 51503

LEWIS CENTRAL COMMUNITY SCHOOL DISTRICT

SITE PLAN

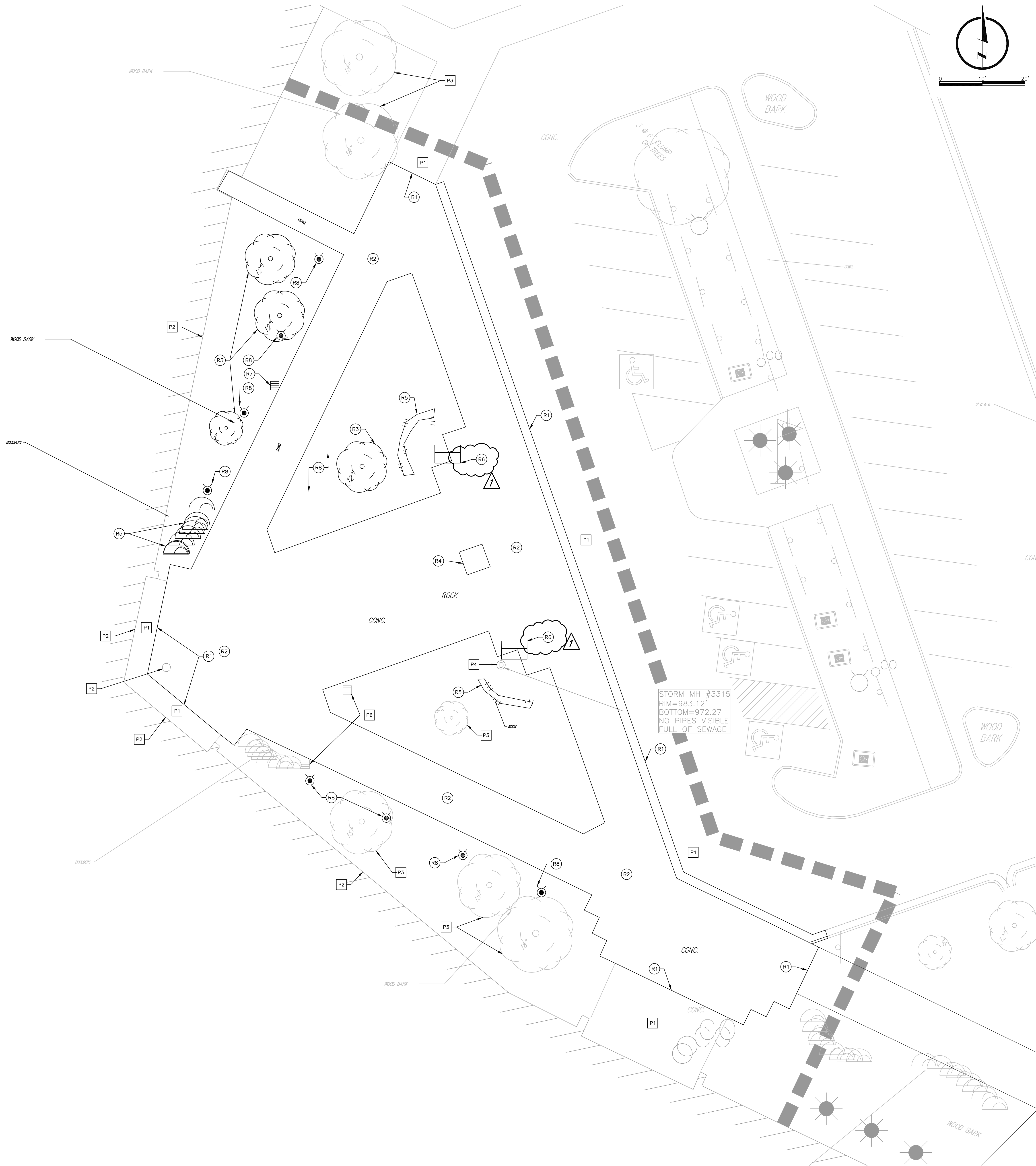
C1-1

CONSTRUCTION DOCUMENTS
BCDM NO. 5551-00
06/19/2025



LAMP RYNEARSON

DESIGNER / DRAFTER	JASON RYNEARSON
REVIEWER	REBEKAH HALL
PROJECT NUMBER	018111-000
DATE	06/19/2025



REMOVAL NOTES

1. THE CONTRACTOR SHALL NOTIFY THE OWNER 72 HOURS IN ADVANCE IF EXISTING UTILITIES CONFLICT WITH NEW CONSTRUCTION OR IF TEMPORARY OUTAGES ARE ANTICIPATED, INCLUDING BUT NOT LIMITED TO WATER, GAS, POWER, CABLE TELEVISION AND TELEPHONE.
2. THE CONTRACTOR SHALL PROTECT ALL EXISTING UTILITIES AND SHALL BE RESPONSIBLE FOR ANY AND ALL DAMAGES TO UTILITIES THAT ARE PERMITTED TO REMAIN IN PLACE. DAMAGES DUE DIRECTLY OR INDIRECTLY TO THE CONTRACTOR'S OPERATIONS SHALL BE PROMPTLY REPAIRED TO THE SATISFACTION OF THE ENGINEER/ARCHITECT AND THE OWNER OF THE PROPERTY, OR SHALL MAKE PAYMENT TO SUCH OWNERS FOR REPAIRS AS MAY BECOME NECESSARY ON ACCOUNT OF DAMAGES THAT ARE DUE TO THEIR OPERATIONS.
3. THE CONTRACTOR SHALL MAKE THEMSELVES AWARE OF ALL OF THE PERMANENT AND TEMPORARY UTILITY APPURTENANCES IN THEIR PRESENT AND/OR RELOCATED POSITIONS. NO ADDITIONAL COMPENSATION WILL BE ALLOWED FOR ANY DELAYS, INCONVENIENCE, OR DAMAGE SUSTAINED DUE TO INTERFERENCE FROM THE SAID UTILITY APPURTENANCES OR THE OPERATION OF DISCONNECTING THEM, INCLUDING THE POSSIBILITY OF UNCOVERING UTILITIES THAT HAVE BEEN ABANDONED AND/OR ARE NOT INDICATED.
4. ALL DEMOLITION RUBBISH WILL BE REMOVED FROM THE SITE BY A LICENSED TRUCKING FIRM, IN COVERED TRUCKS, AND TAKEN TO A LICENSED LANDFILL. ALL THIS WILL BE PAID FOR BY THE CONTRACTOR AND WILL BE PART OF THE CONTRACTOR'S BASE BID.
5. COORDINATION WITH FIRE DEPARTMENTS AND UTILITY COMPANIES SHALL BE THE RESPONSIBILITY OF THE CONTRACTOR.
6. NO BURNING OF MATERIALS WILL BE PERMITTED.
7. WHERE INDICATED THE EXISTING PAVEMENT SHALL BE REMOVED AND LEGALLY DISPOSED OF OFF THE PROJECT SITE. CONTRACTOR SHALL NOT USE A HEAVY BALL FOR BREAKING UP OF EXISTING PAVEMENT OVER PUBLIC WATER AND GAS MAINS.
8. TRENCH BACKFILL AND ANY SUBGRADE SOILS DISTURBED BY THE PAVEMENT REMOVAL PROCESS SHALL BE RECOMPACTED AS SPECIFIED IN THE COMPACTION REQUIREMENTS TABLE OR AS DIRECTED BY THE GEOTECHNICAL ENGINEER.
9. NO TREES SHALL BE REMOVED BETWEEN MAY 15 AND JULY 31 IN ACCORDANCE WITH FISH AND WILDLIFE'S RULING ON THE PROTECTION OF THE ENDANGERED LONG-EARED BAT.
10. ANY TREES, BUSHES, OR OTHER VEGETATION WITH THE POTENTIAL TO BE NESTING HABITAT TO BE REMOVED DURING THE PRIMARY MIGRATORY BIRD NESTING SEASON (APRIL 1 THROUGH SEPTEMBER 1) REQUIRE A MIGRATORY BIRD SURVEY PRIOR TO REMOVAL. CONTRACTOR SHALL CONDUCT THE SURVEY AND THEIR OPERATIONS IN ACCORDANCE WITH THE RECOMMENDATIONS SET FORTH IN THE NEBRASKA DEPARTMENT OF TRANSPORTATION'S AVIAN PROTECTION PLAN. MIGRATORY BIRD SURVEYS SHALL BE PAID FOR BY THE CONTRACTOR AT NO ADDITIONAL COST TO THE OWNER. IF THE CONTRACTOR ELECTS TO REMOVE HABITAT DURING THE NESTING SEASON, THE CONTRACTOR SHALL PROVIDE A COPY OF THE COMPLETED BIRD SURVEY TO THE ENGINEER.

REMOVAL KEYNOTES

- R1 SAWCUT PAVEMENT, FULL DEPTH.
(NOT A SEPARATE PAY ITEM, INCIDENTAL TO PAVEMENT REMOVAL)
- R2 REMOVE PAVEMENT.
- R3 REMOVE TREE.
- R4 REMOVE, AND SALVAGE MONUMENT STRUCTURE. SEE SHEET C1-4 FOR NEW LOCATION.
- R5 REMOVE LANDSCAPE ROCK.
- R6 REMOVE AND SALVAGE MEMORIAL BENCH. SEE SHEET C1-4 FOR NEW LOCATION.
- R7 REMOVE IRRIGATION BOX AND ADJUST IRRIGATION SYSTEM AS NECESSARY.
- R8 REMOVE LANDSCAPE LIGHTS. SEE PAVING PLANS FOR NEW BILLIARD LIGHT LOCATIONS. COORDINATE WITH ELECTRICAL PLANS FOR MORE INFORMATION.

PROTECT KEYNOTES

- P1 PROTECT PAVEMENT.
- P2 PROTECT BUILDING/STRUCTURAL COLUMNS.
- P3 PROTECT TREE.
- P4 PROTECT STORM SEWER STRUCTURE.
- P5 PROTECT SIGN.
- P6 PROTECT IRRIGATION STRUCTURE.

UTILITY CONTACTS

SANITARY SEWER:	COUNCIL BLUFFS SEWER DEPARTMENT	712-328-4644
POWER:	MID-AMERICAN ENERGY	888-427-5632
TELEPHONE:	ROBERT KNAPP CENTURY LINK	402-572-5824
CABLE TV:	GREG SORGENFIN COX COMMUNICATIONS	402-934-0444
WATER:	COUNCIL BLUFFS WATER WORKS	712-328-1006
GAS:	CHRIS DEWEY BLACK HILLS ENERGY	712-325-3022
PRIVATE:		
LEWIS CENTRAL COMMUNITY SCHOOLS		712-366-8243



LAMP RYNEARSON

DRAWN / DRAFTER
JASON RYNEARSON
REVIEWER
BRIAN HALL
PROJECT NUMBER
018111-000
DATE
06/19/2025

PROJECT TEAM

ARCHITECTURE + INTERIORS
BCDM ARCHITECTS
1015 North 98th Street, Suite 300
Omaha, NE 68114

CIVIL ENGINEER

LAMP RYNEARSON
14710 W. Dodge Rd. Suite 100
Omaha, NE 68154

STRUCTURAL ENGINEER

LANGE STRUCTURAL GROUP
1919 S 40th Street Suite 302
Lincoln, NE 68506

MECHANICAL + ELECTRICAL ENGINEER

ALVINE
1201 Cass Street
Omaha, NE 68102

REVISION SCHEDULE

ADD #	ADDENDUM NO. 1	06/19/2025
#	Description	Date

LEWIS CENTRAL HIGH SCHOOL ENTRY ADDITION

3504 Harry Langdon Blvd,
Council Bluffs, IA 51503

LEWIS CENTRAL COMMUNITY SCHOOL DISTRICT

REMOVAL PLAN

C1-2

CONSTRUCTION DOCUMENTS
BCDM NO. 5551-00
06/19/2025

1. PROPOSED CONTOURS ARE FINISHED GRADE/TOP OF PAVEMENT ELEVATIONS. NOT SUBGRADE ELEVATIONS.
2. ALL SPOT ELEVATIONS IN PAVEMENT ARE TOP OF SLAB UNLESS NOTED OTHERWISE.

1. STANDARD PROCTOR SHALL BE DETERMINED IN ACCORDANCE WITH ASTM D 698.
2. MODIFIED PROCTOR SHALL BE DETERMINED IN ACCORDANCE WITH ASTM D 1557

(G) STORMWATER POLLUTION PREVENTION KEYNOTES

NOTE: ALL SWPPP-RELATED MEASURES AND BMPs SHALL BE MAINTAINED THROUGHOUT CONSTRUCTION AND SHALL BE THE RESPONSIBILITY OF THE CONTRACTOR. BMPs MUST REMAIN IN PLACE UNTIL THE PROJECT SITE IS FULLY STABILIZED OR AS DIRECTED BY THE EROSION CONTROL INSPECTOR. ALTERNATE LOCATIONS OF SWPPP-RELATED MEASURES SHALL BE COORDINATED WITH THE EROSION CONTROL INSPECTOR.

- | | |
|---------|--|
| G1 | CONSTRICT TRACK OUT CONTROL IN ACCORDANCE WITH FIGURE 9040.120 OF THE SUDAS SPECIFICATIONS MANUAL. |
| G2 | AS NECESSARY, CONTRACTOR SHALL IMPLEMENT DUST CONTROL MEASURES PER SECTION 9040 OF THE SUDAS SPECIFICATIONS MANUAL. SEPARATE PAYMENT SHALL NOT BE MADE FOR DUST CONTROL. |
| IP1-IP2 | INSTALL AND MAINTAIN INLET PROTECTION IN ACCORDANCE WITH SECTION 9040 OF THE SUDAS SPECIFICATIONS MANUAL. |
| W1-W2 | CONSTRUCT, MAINTAIN, AND CLEAN OUT WATTLE IN ACCORDANCE WITH FIGURE 9040.105 OF THE SUDAS SPECIFICATIONS MANUAL. |

REVISION SCHEDULE		
ADD 1	ADDENDUM NO. 1	06/30/2025
#	Description	Date

3504 Harry Langdon Blvd,
Council Bluffs, IA 51503

GRADING PLAN

CONSTRUCTION DOCUMENTS
BCDM NO. 5551-00
06/19/2025



**LAMP
RYNEARSON**

OMAHA, NEBRASKA 10101 N. 240th St., STE. 100 (402) 498-2488 NE 4th St. NW, DARTRE	DESIGNER / DRAFTER JASON KASPAR REVIEWER BREDA HALL PROJECT NUMBER 0125111-CGD DATE 08/19/2025
---	---

PROJECT TEAM

ARCHITECTURE + INTERIORS

BCDM ARCHITECTS
1015 North 98th Street, Suite 300
Omaha, NE 68114

CIVIL ENGINEER

LAMP RYNEARSON
14710 W. Dodge Rd. Suite 100
Omaha, NE 68154

STRUCTURAL ENGINEER

LANGE STRUCTURAL GROUP
1919 S 40th Street Suite 302
Lincoln, NE 68506MECHANICAL + ELECTRICAL
ENGINEERALVINE
1201 Cass Street
Omaha, NE 68102

PORTLAND CEMENT CONCRETE (PCC) PAVING NOTES

- ALL PAVING ELEVATIONS ARE AT TOP OF SLAB UNLESS NOTED OTHERWISE.
- INTEGRAL CURB SHALL BE INSTALLED AT THE LOCATIONS SHOWN BELOW AND IN ACCORDANCE WITH IOWA STANDARD URBAN DESIGN AND SPECIFICATIONS DIVISION 7 SECTION 7010 AND THE 2025 COUNCIL BLUFFS SUPPLEMENTAL SPECIFICATIONS.
- PAVEMENT SUBGRADE TO A DEPTH OF 12 INCHES AND TO A WIDTH OF 2 FEET OUTSIDE PAVEMENT EDGES SHALL BE COMPACTED AS SPECIFIED IN THE COMPACTION REQUIREMENTS TABLE (SEE SHEET C1-3).
- BACKFILL BEHIND CURBS SHALL BE COMPACTED TO A MINIMUM IN-PLACE DENSITY OF 90% OF "MAXIMUM DENSITY" AS DETERMINED IN ACCORDANCE WITH ASTM D 1557 (90% MODIFIED PROCTOR).
- THE CONTRACTOR SHALL CONTACT THE SOILS ENGINEER TO OBSERVE THE SUBGRADE PRIOR TO PLACING PAVEMENT TO DELINEATE ANY AREAS WHERE SUBGRADE OVEREXCAVATION MAY BE REQUIRED.
- THE CONTRACTOR IS REFERRED TO THE FOLLOWING SUDAS FIGURES:
7010.101 CONCRETE PAVEMENT JOINTS
7010.102 CONCRETE CURBS
7010.801 PAVEMENT JOINTS
7010.902 CONCRETE PAVEMENT WIDENING
7010.904 TYPICAL JOINTING LAYOUT
- CONCRETE MIX SHALL BE CV-SUD-C15 AS SHOWN IN THE IOWA D.O.T. I.M. 529 PROPORTION TABLE 4 (SUDAS CONCRETE MIXES) AND THE 2025 COUNCIL BLUFFS SUPPLEMENTAL SPECIFICATIONS.
- JOINT PATTERNS
A. THE MAXIMUM PANEL DIMENSION IN FEET IS EQUAL TO THE LESSER OF TWICE THE PAVEMENT THICKNESS IN INCHES OR FIFTEEN FEET.
B. THE RATIO OF PANEL LENGTH TO WIDTH SHOULD NOT EXCEED 1.25:1.
- PAVEMENT REMOVAL AND REPLACEMENT TO BE MADE TO TRANSVERSE JOINTS. JOINT TO BE RE-SAWED FULL DEPTH PRIOR TO REMOVAL. NEW PAVEMENT TO BE TIED TO THE EXISTING USING BT AND RT JOINTS AS PER SUDAS SECTION 7010. SEE FIGURE 7010.101. PCC FOR ALL ROADWAY PATCHING TO BE A C-4 MIX. PATCHES TO MATCH THE THICKNESS OF THE EXISTING PAVEMENT OR A MINIMUM THICKNESS OF 6", WHICHEVER IS GREATER. JOINTS IN NEW PAVING TO MATCH EXISTING PATTERN.

SIDEWALK NOTES

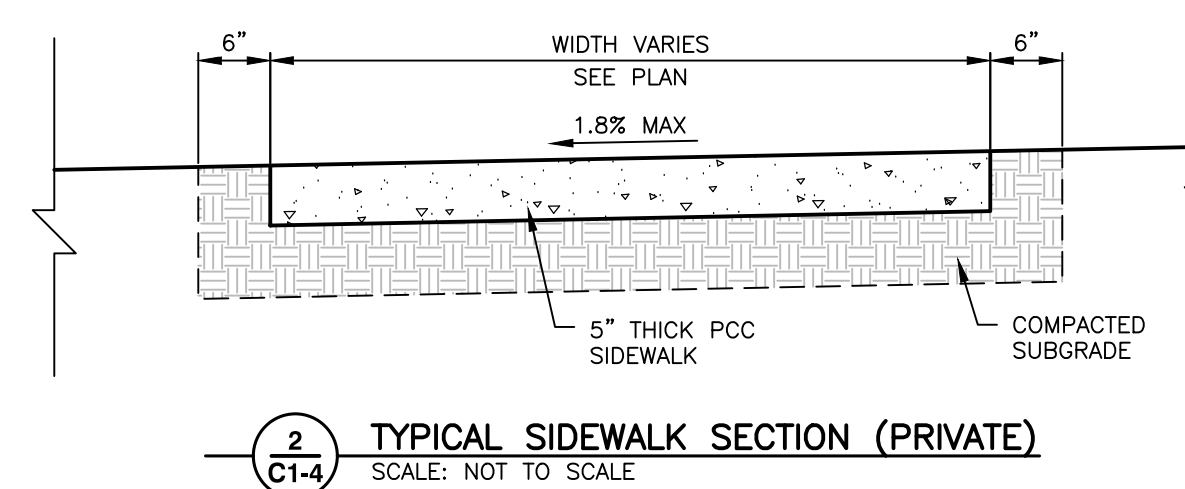
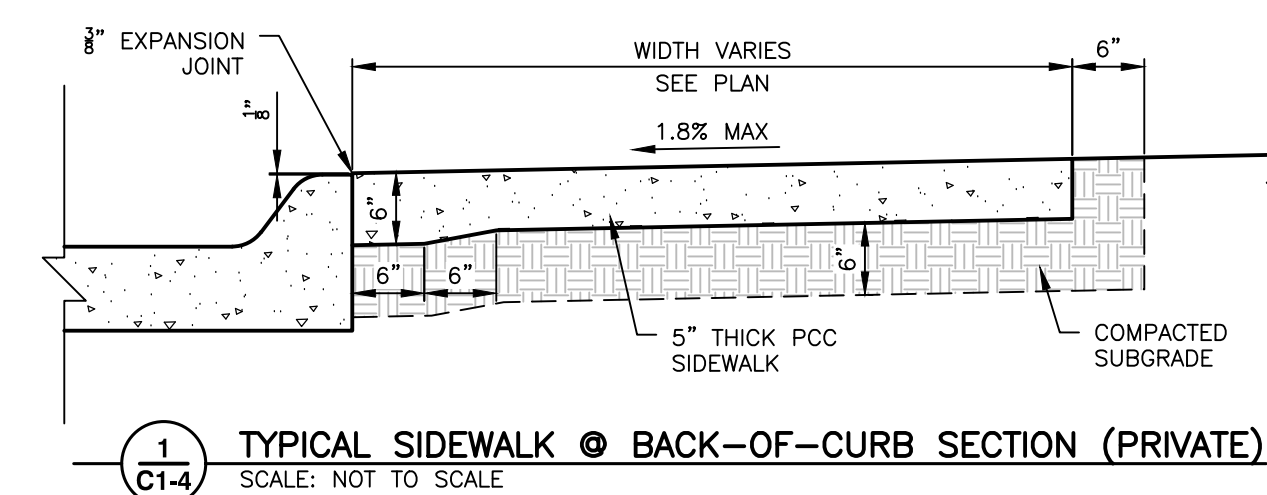
- ALL SIDEWALKS SHALL BE IN ACCORDANCE WITH IOWA STANDARD URBAN DESIGN AND SPECIFICATIONS DIVISION 7 SECTION 7030 AND THE 2025 COUNCIL BLUFFS SUPPLEMENTAL SPECIFICATIONS.
- SIDEWALK SUBGRADE TO A DEPTH OF 6 INCHES AND TO A WIDTH OF 6 INCHES OUTSIDE OF SIDEWALK EDGES SHALL BE COMPACTED AS SPECIFIED IN THE COMPACTION REQUIREMENTS TABLE. (SEE SHEET C1-3)
- BACKFILL SHALL BE COMPACTED AS SPECIFIED IN THE COMPACTION REQUIREMENTS TABLE. (SEE SHEET C1-3)
- THE CONTRACTOR IS REFERRED TO THE FOLLOWING SUDAS FIGURES:
7030.201 SIDEWALK CONSTRUCTION
7030.202 CURB DETAIL FOR CLASS A SIDEWALK
7030.204 GENERAL FEATURES OF AN ACCESSIBLE SIDEWALK
7030.205 GENERAL SIDEWALK AND CURB RAMP DETAILS
7030.206 CURB RAMP OUTSIDE OF INTERSECTION RADIUS
7030.207 CURB RAMP FOR CLASS B OR C SIDEWALK
7030.208 ALTERNATIVE CURB RAMP FOR CLASS B OR C SIDEWALK
7030.209 CONCRETE CURB RAMP FOR CLASS A SIDEWALK
7030.210 DETECTABLE WARNING PLACEMENT

P PAVING KEYNOTES

- P1. CONSTRUCT 7" THICK PORTLAND CEMENT CONCRETE PAVEMENT WITH INTEGRAL CURB AND GUTTER.
- P2. CONSTRUCT 5" THICK PORTLAND CEMENT CONCRETE SIDEWALK IN ACCORDANCE WITH SUDAS FIGURE 7030.201. SEE THIS SHEET FOR TYPICAL SIDEWALK SECTION.
- P3. CONSTRUCT CURB RAMP IN ACCORDANCE WITH SUDAS FIGURE 7030.206.
- P4. CONSTRUCT THICKENED EDGE AND INSTALL TIE-BARS TO EXISTING PAVEMENT. NO. 5 X 18" EPOXY-COATED TIE BARS @ 36" CENTERS TO BE DRILLED AND EPOXIED INTO EXISTING PAVEMENT. SEE NOTE THIS SHEET.
- P5. CONSTRUCT 1/2" EXPANSION JOINT AND COLOR MATCHED SEALANT WHERE SIDEWALK ABUTS BUILDING FACE.
- P6. RECONSTRUCTED MONUMENT STRUCTURE LOCATION. SEE STRUCTURAL AND ARCHITECTURAL PLANS FOR DETAILS. NEW MONUMENT FOOTING SHALL BE 10" BELOW FINISHED GRADES.
- P7. LIGHTED BOLLARD LOCATION. SEE ELECTRICAL PLANS FOR MORE INFORMATION.
- P8. INSTALL SALVAGED MEMORIAL BENCHES.
- P9. INSTALL CONCRETE SPLASH BLOCK AT DOWNSPOUT. VERIFY LOCATION WITH MECHANICAL PLANS. SPLASH BLOCK SHALL BE MENARDS MODEL NUMBER 1794467 OR APPROVED EQUAL.
- P10. STRUCTURAL STOOP. SEE ARCHITECTURAL PLANS FOR DETAILS.

PL PLAZA KEYNOTES

- PL1. CONSTRUCT BEVELED CONTROL JOINTS, TYPICAL OF ALL CONTROL JOINTS WITHIN THE LIMITS OF THE PLAZA SHOWN ON THE PLANS. JOINTS SHALL NOT EXCEED 1/2" TOTAL WIDTH. LAYOUT PER PLAN. PROVIDE ENGINEER AND LANDSCAPE ARCHITECT WITH FINAL JOINTING PLAN. JOINTS SHALL BE SEALED USING POLYURETHANE OR SILICONE JOINT SEALANT. SUBMIT SEALANT COLOR SELECTIONS TO ENGINEER AND LANDSCAPE ARCHITECT FOR APPROVAL PRIOR TO ORDERING.
- PL2. FURNISH AND INSTALL 6" WIDTH PRECAST PCC BENCH - MODEL #TF5113 CONCRETE BENCH BY WAUSAU TILE, OR APPROVED EQUAL. BENCH FINISH SHALL BE A22 SAND. INSTALL PER MANUFACTURER'S SPECIFICATIONS. CONTACT WAUSAU TILE (800-388-8728, WTILE@WAUSAUTILE.COM) FOR ADDITIONAL INFORMATION. BENCHES SHALL BE SPACED 6" FROM EACH OTHER.



REVISION SCHEDULE

#	DESCRIPTION	DATE
ADD 1	ADDENDUM NO. 1	06/30/2025

LEWIS
CENTRAL
HIGH
SCHOOL
ENTRY
ADDITION3504 Harry Langdon Blvd,
Council Bluffs, IA 51503LEWIS CENTRAL
COMMUNITY SCHOOL
DISTRICT

PAVING PLAN

C1-4

CONSTRUCTION DOCUMENTS
BCDM NO. 5551-00
06/19/2025